



LONDON WEMBLEY PARK HOTEL

>> **"LOW COST" DESIGNER HOTEL. FOR THE NEW SOCIETY.**
Quality in goods and services but in a minimum cost.

> **THE LOW BUDGET MARKET - LOWXURIOUS.** Adaptable for any guest;
businessmen, young tourists, etc

the rooms are self sufficient units, structurally, architecturally and functionally,
for every guest.

> **THE BEST SOLUTION** for the modern hotel industry

[DESIGN, INNOVATION, COMFORT, REDUCTION IN PERSONNEL COSTS ,
SPACE OPTIMIZATION, ENERGY EFFICIENT DESIGN]

> **SIMPLE COMFORT.**



LOOKOTELS

info@lookotels.com
www.lookotels.com

2010

WHY A MODULAR SYSTEM?

> INDUSTRIAL ARCHITECTURE



- > AS WE PREFABRICATED MODULES THIS REDUCES SITE CONSTRUCTION TIME AND WHILE ESURING CONSTRUCTION QUALITY

Construction of a **hotel of 100 units in 6 MONTHS** AND ONES WE HAVE THE PRINCIPAL STRUCTURE WE CAN STACK X GUESTS UNITS / DAY DEPENDING ON THE FACILITIES

- > THE GUESTS UNITS ARE STRUCTURAL RESISTANT
- > THEY HAVE ALL THE INSTALATIONS AND EQUIPMENT INSIDE

> Space optimization

Adaptation of the number of units in accordance with the demand

Spaces of accommodations that can be transportable

Installation of a hotel adequated to any kind of events:
temporary events (sporting events, concerts,...) Airports, hospital, etc

> Energy efficient design

Reduction of non-profit zones by centralization of controls

DYNAMIC, COSMOPOLITAN, USEFUL AND SAFE

THE BEST SOLUTION FOR THE MODERN





ARQUITECTURAL PROPOSALS

> REMOVABLE AND TRANSPORTABLE GUESTS UNITS

> STACKING SYSTEM

> WITH THE CONSTRUCTION OF A PRINCIPAL STRUCTURE WE CAN MIX THE MODULAR SYSTEM, **STACKING PREFABRICATED MODULES.**

> ALL THE GUESTS UNITS ARE ALREADY FINISHED BEFORE THEY ARRIVE WITH ALL THE INSTALATIONS AND EQUIPMENTS

> THIS **REDUCES THE CONSTRUCTION TIME AND ENSURES CONSTRUCTION QUALITY.**

STRUCTURE

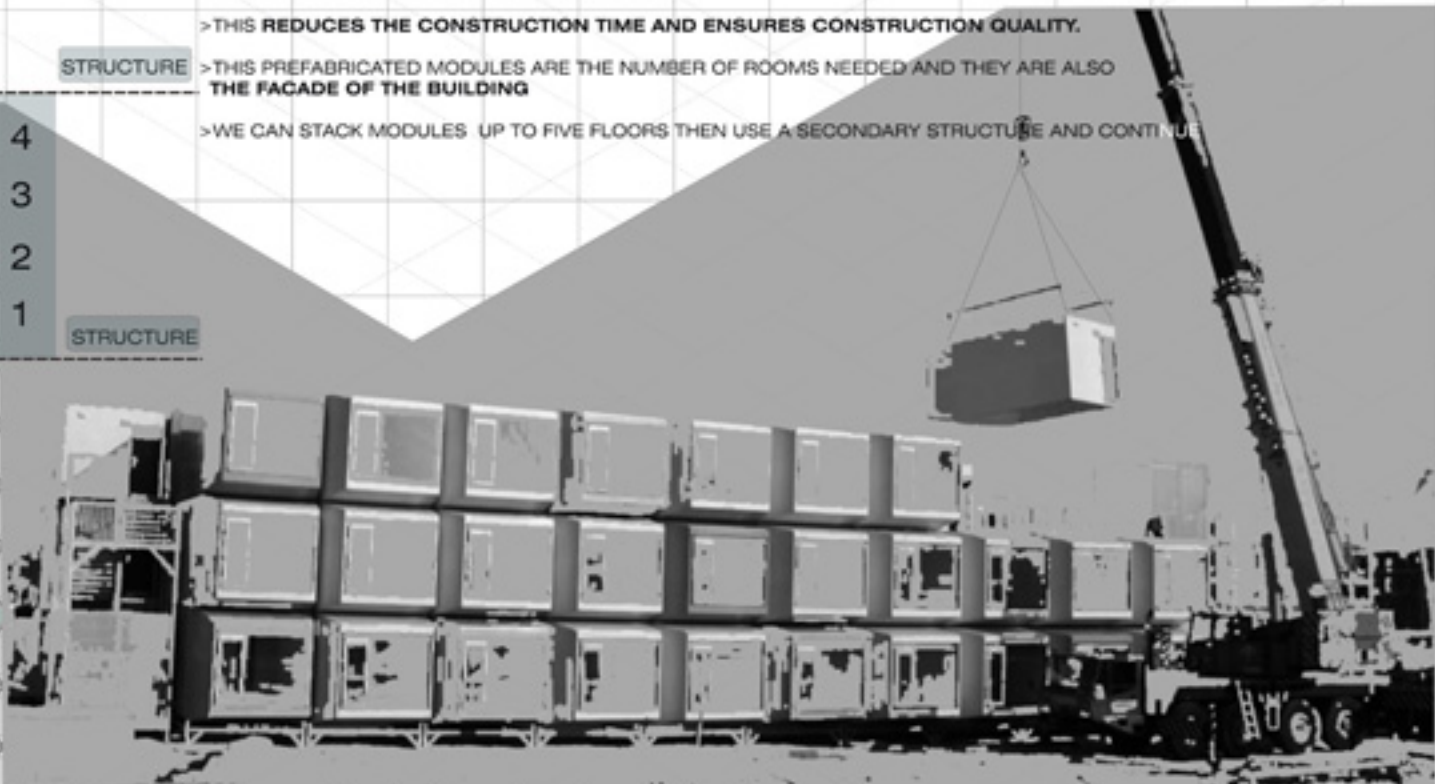
> THIS PREFABRICATED MODULES ARE THE NUMBER OF ROOMS NEEDED AND THEY ARE ALSO **THE FACADE OF THE BUILDING**

> WE CAN STACK MODULES UP TO FIVE FLOORS THEN USE A SECONDARY STRUCTURE AND CONTINUE

CIRCULATION

4
3
2
1

STRUCTURE



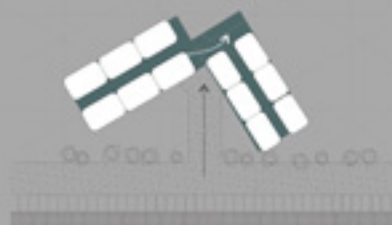
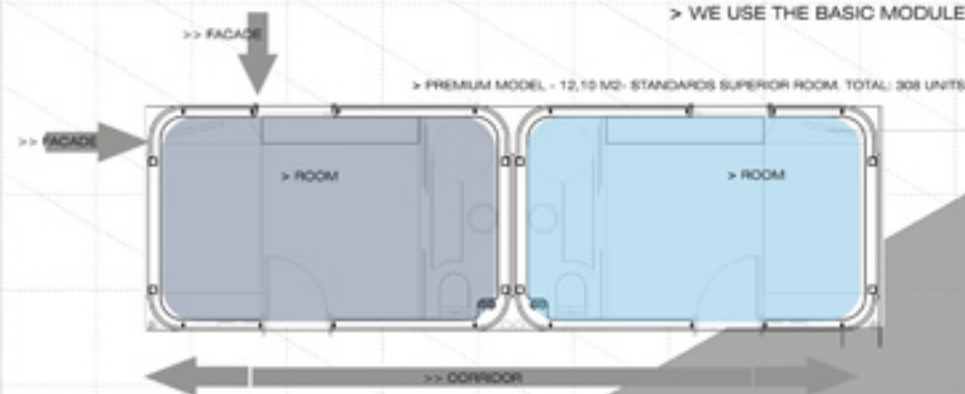


ARCHITECTURAL PROPOSALS

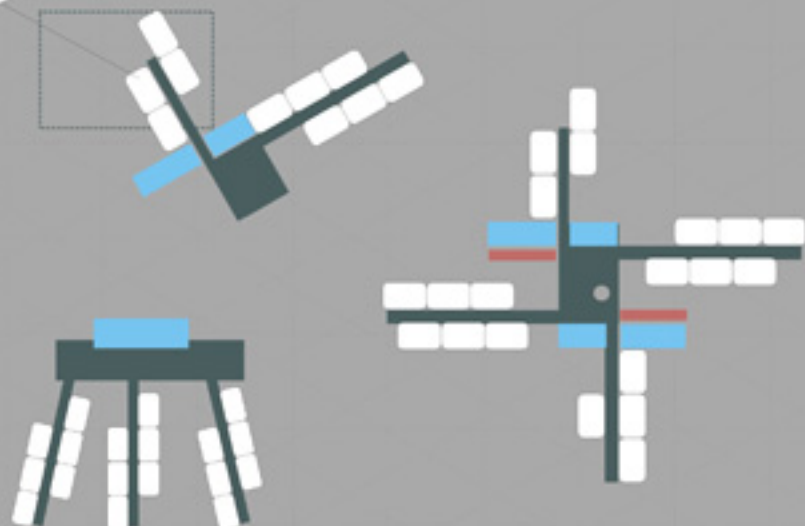
- > Guests units **removable and transportable**
- > **Adaptation** of the units number in accordance with the demand
- > Adaptable to any kind of **PROGRAM and LOCATION**. Temporary events (sports, concerts...)

> **THE DISTRIBUTION IS FLEXIBLE ACCORDING TO THE LOCATION AND PROGRAM**

> WE USE THE BASIC MODULE OF A PREMIUM ROOM



> THE units are adaptable for any location and program



> different examples of compositions suitable for each program and location

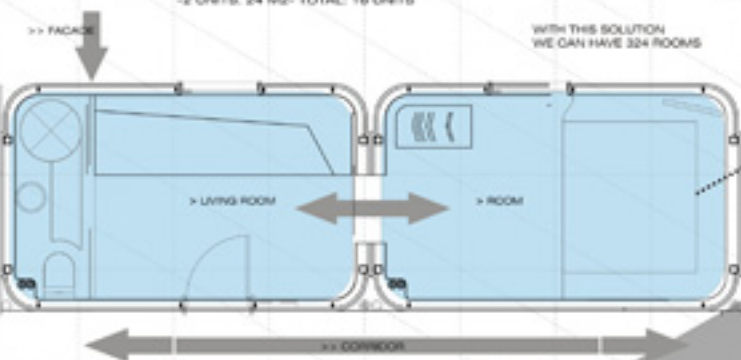




ARQUITECTURAL PROPOSALS

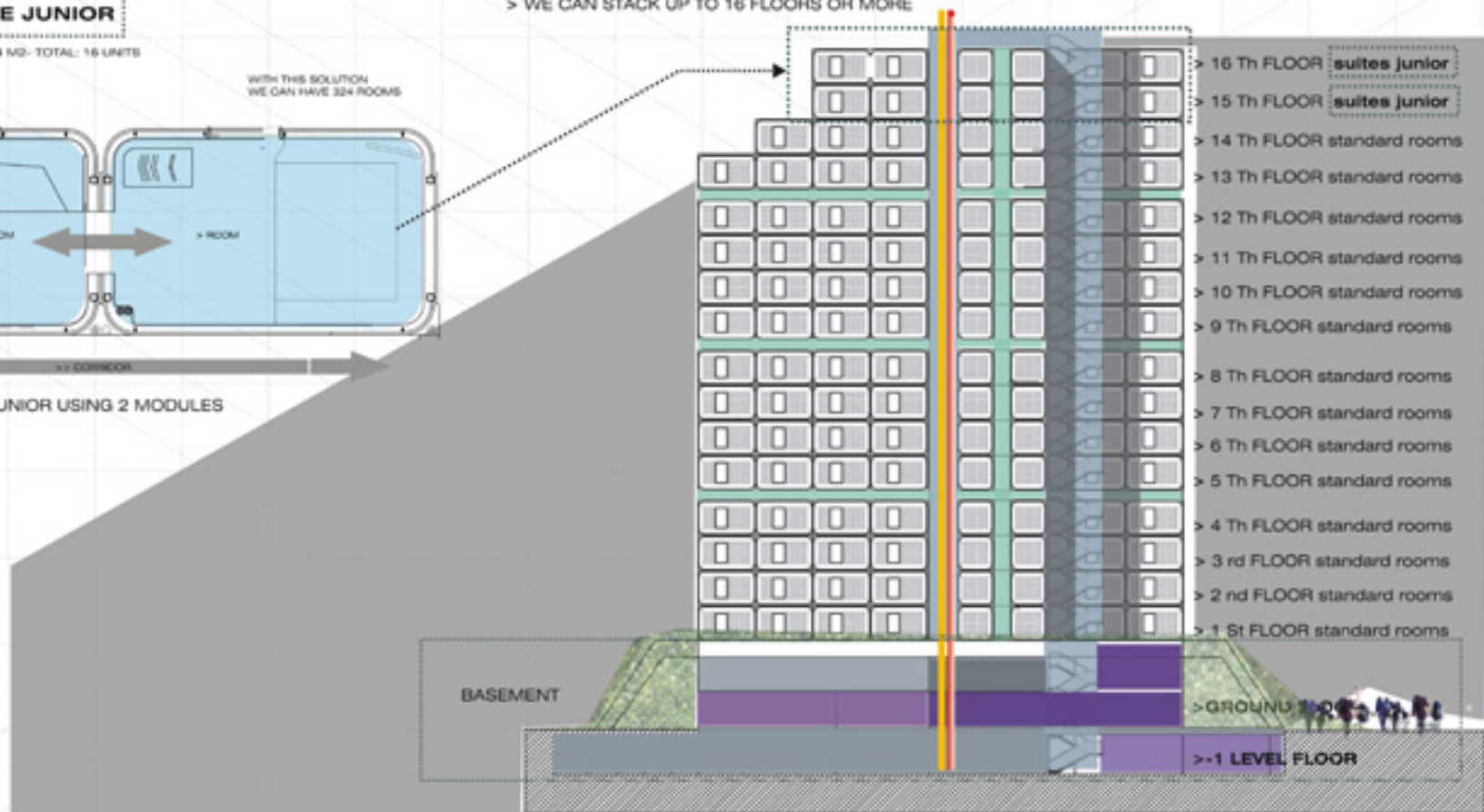
SUITE JUNIOR

-2 UNITS, 24 M²- TOTAL: 16 UNITS



> WE CAN HAVE A SUITE JUNIOR USING 2 MODULES

- > ALL THE STAIRS AND ELEVATORS ARE INDEPENDENT
- > WE CAN STACK UP TO 16 FLOORS OR MORE





ARQUITECTURAL PROPOSALS

ARQUITECTURAL

> Adaptable to any kind of **PROGRAM and LOCATION**. Temporary events (sports, concerts...) airports, train stations, hospitals, military areas, festivals, university campus...

> For any kind of guest: executive, young people, tourists, etc....

> THE BUILDING HAS A TECHNOLOGY AND INDUSTRIAL IMAGE AND HAS A LOT OF POSSIBILITIES TO PLAY WITH LIGHT AND COLORS IN THE FACADE

> THIS IS VERY IMPORTANT FOR MARKETING AND FOR THE 2012 OLYMPIC GAMES

> **Adaptation** of the units number in accordance with the demand

> THE "ROOM UNITS" ARE THE FACADE

>> WITH A PRINCIPAL STRUCTURE WE PUT "ROOM UNITS" INSIDE

INDUSTRIAL
HI-TECH

> GREAT IMPACT

