



aguasdebusot

REQUENA Y PLAZA

1. dotacional publico. Recreativo-deportivo sup. 1.740 m²

Ocupacion 40% (696 m²)

edificabilidad 0.473 m²/m² parcela (823 m²)

nº de plantas 2

sotano y semisotano no computa

Planta baja

Recepcion 74 m²

acceso servicios 47 m²

habitacion tipo 18 m² x 16= 288m²

Sotano - semisotano

sotano servicios + cocina 150 m²

aseos + cafeteria + terraza 135 m²

***total construido 694 m²**

***ocupacion 410 m² aprox**

*aproximado



concepto



tradicion



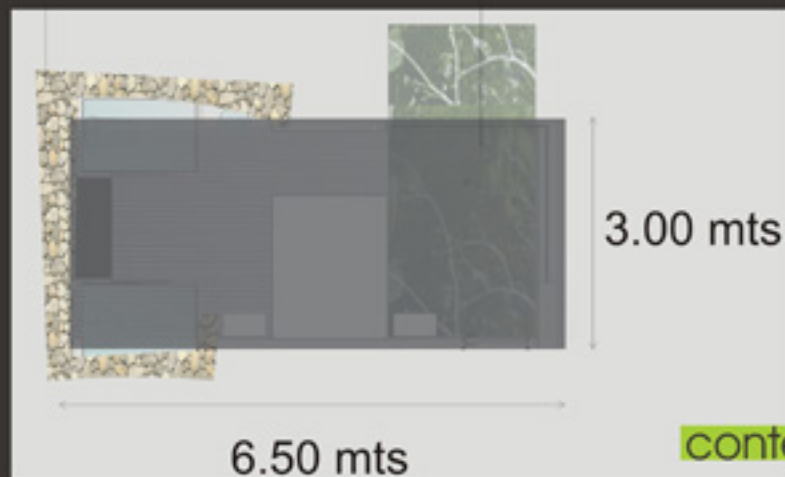
contemporaneo



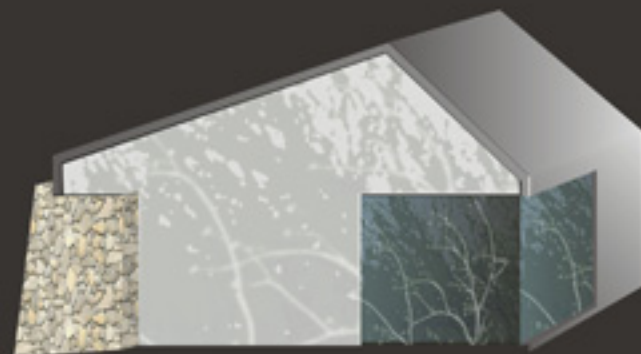
tradicion

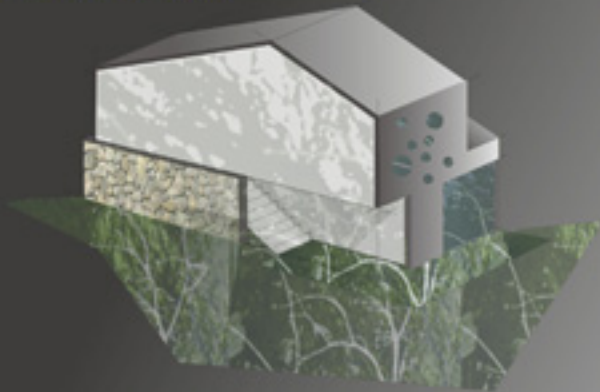
in-situ

prefabricado

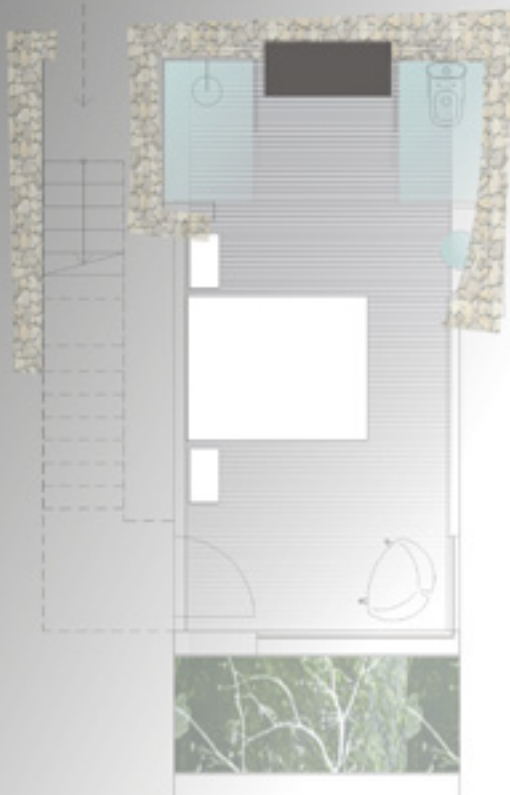


contemporaneo



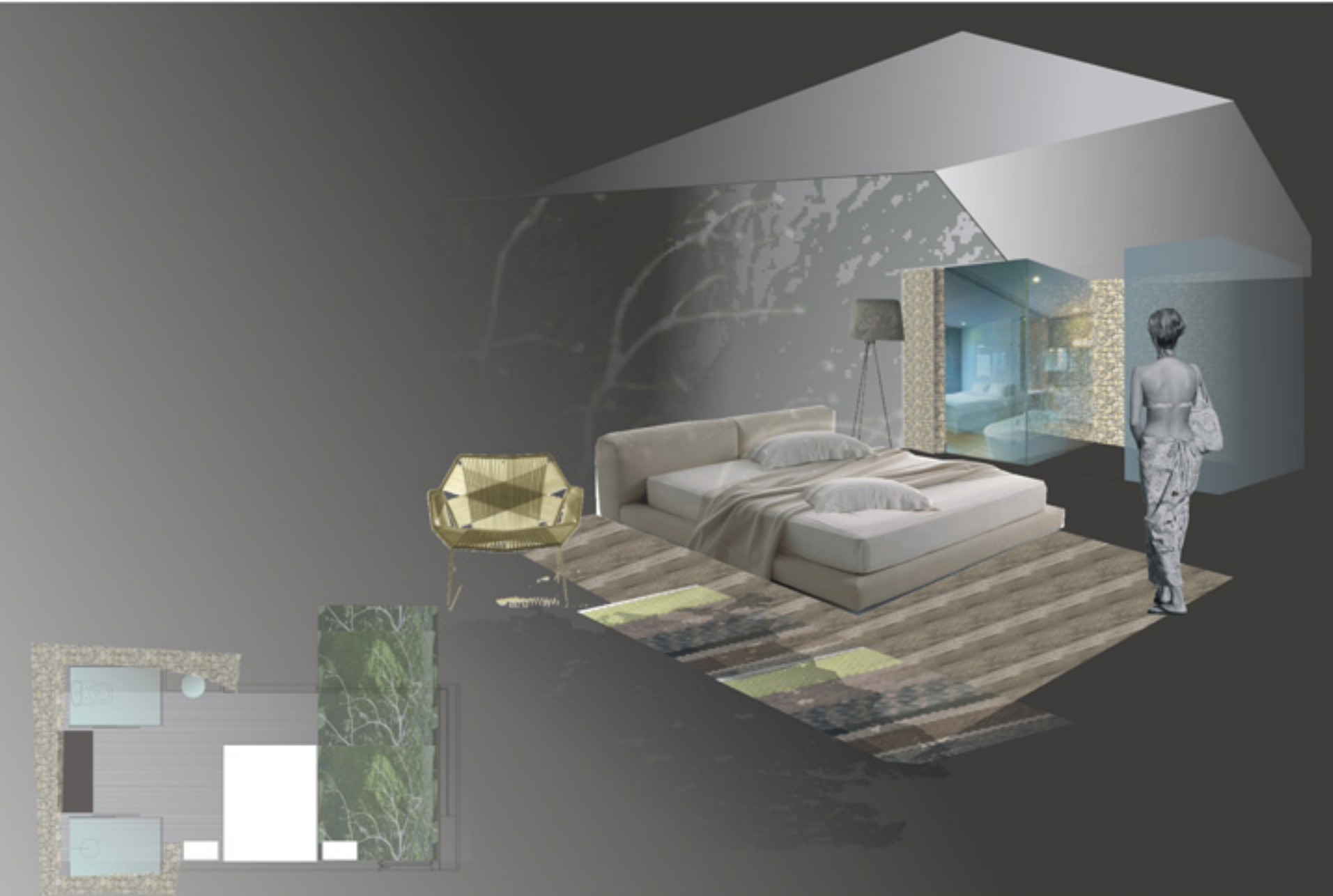


Planta alta
Habitacion doble 18 m2

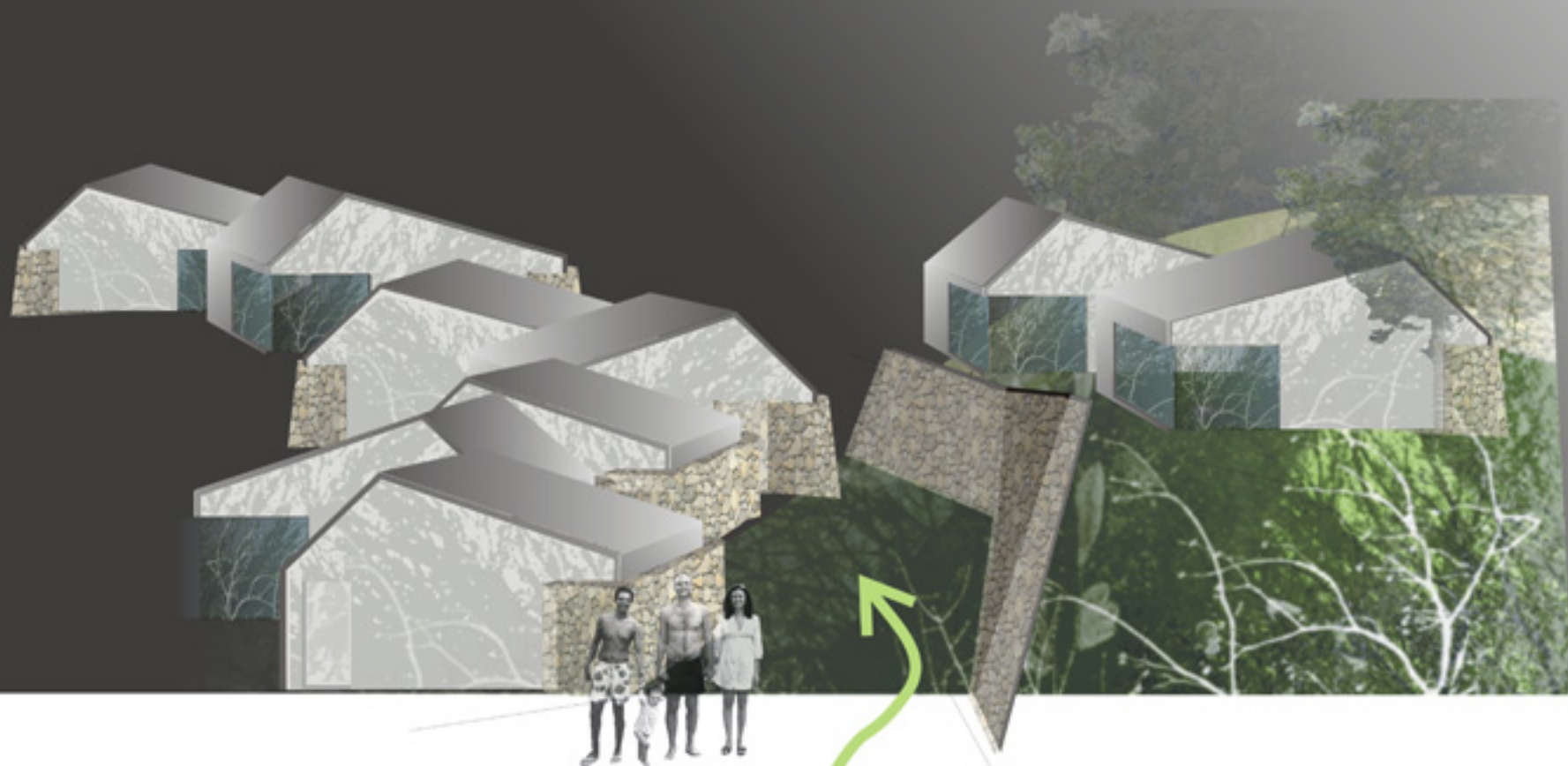


Planta baja
Habitacion doble 22 m2

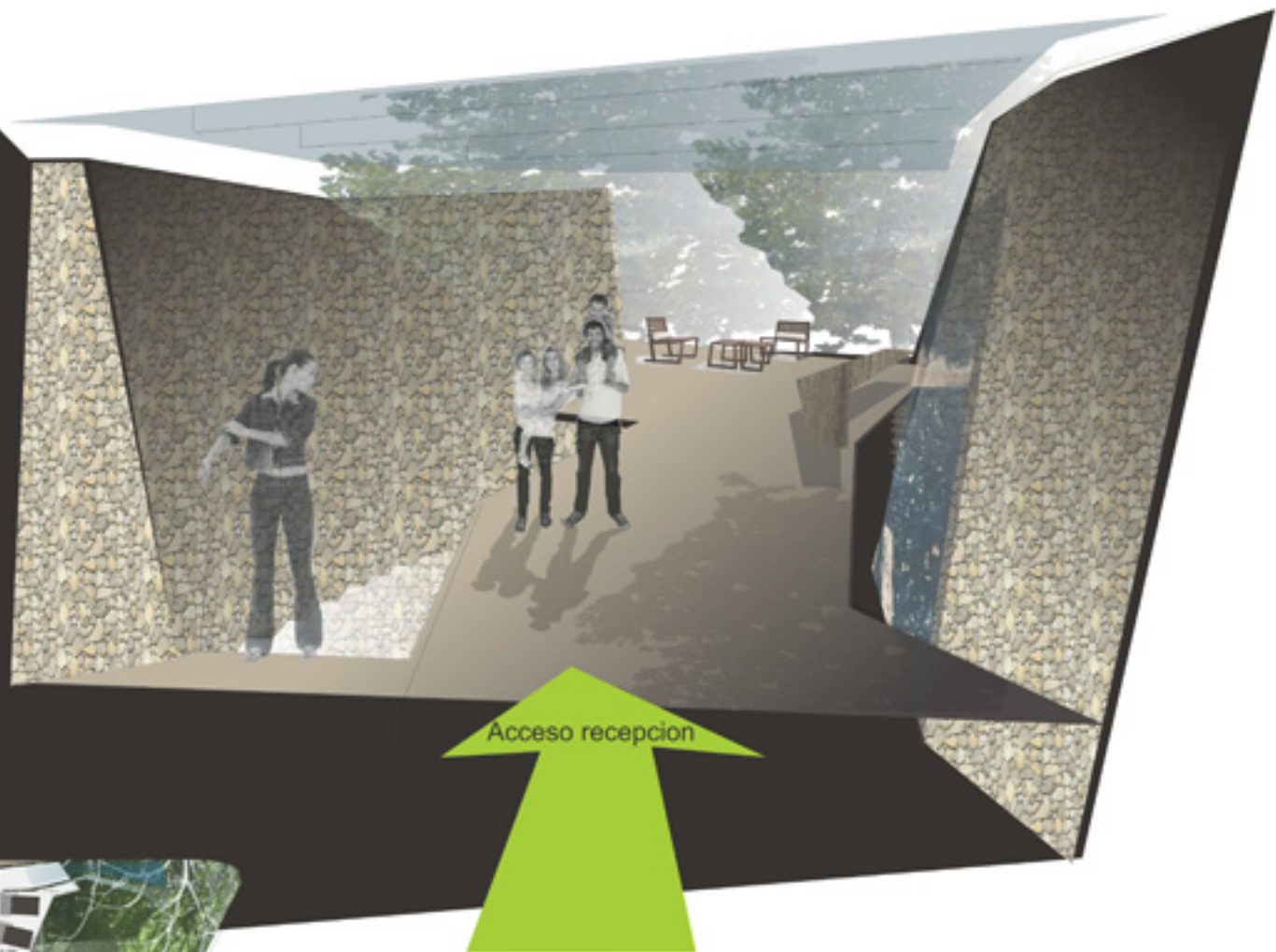




Circulaciones y recorridos



Recepcion - lobby



Acceso recepcion



Cafeteria-restaurante

